

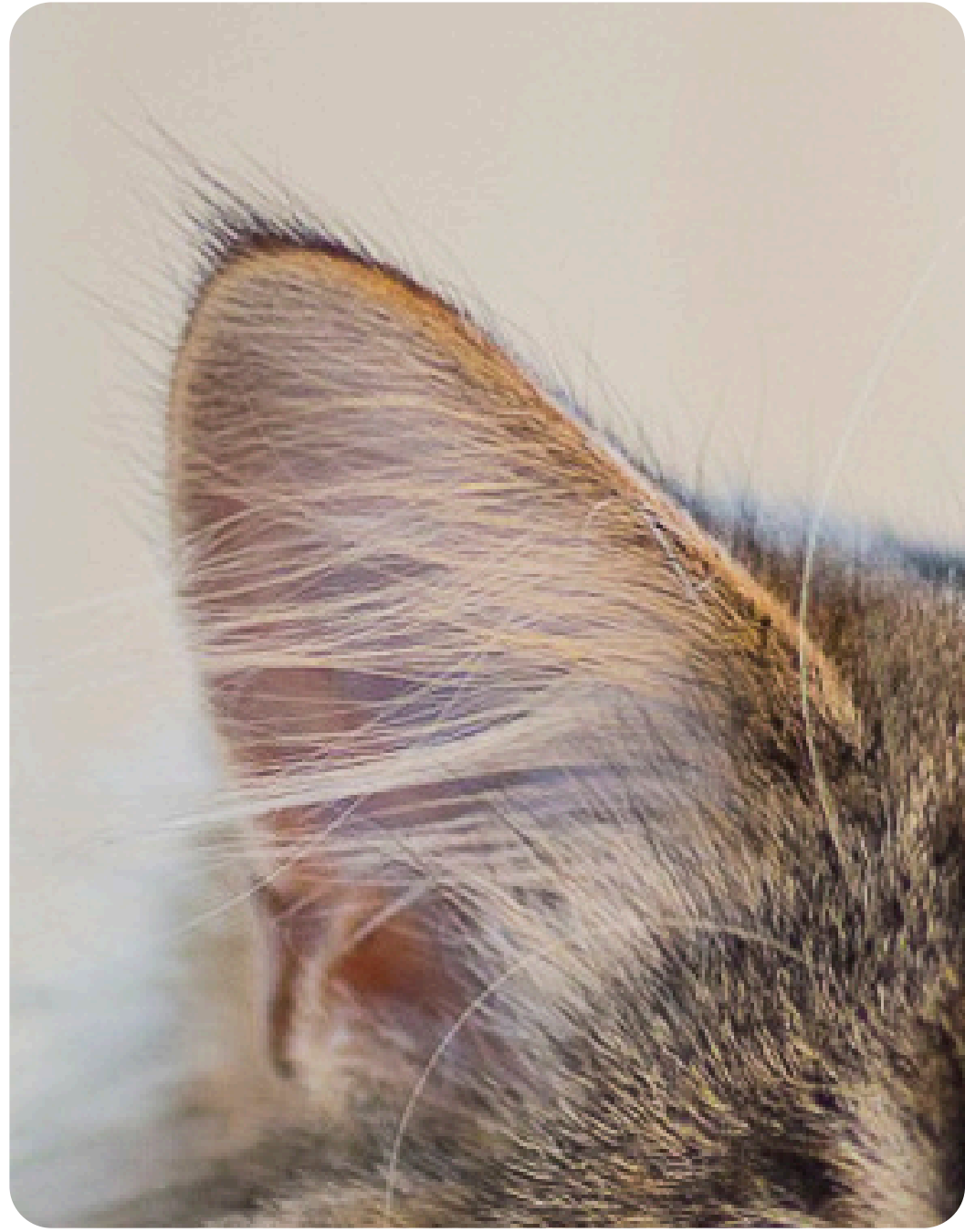
**Body
Parts**

+ Animals



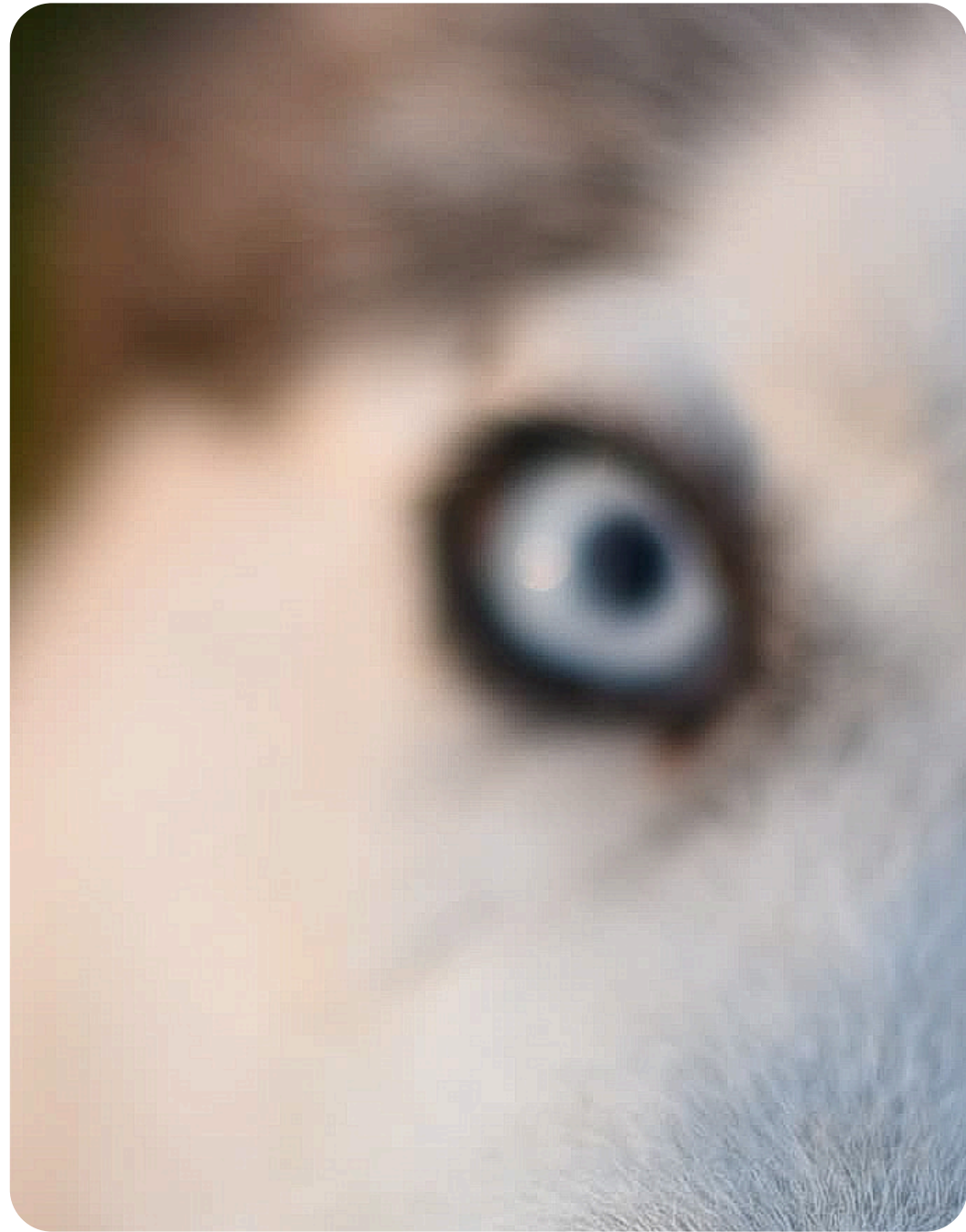
1

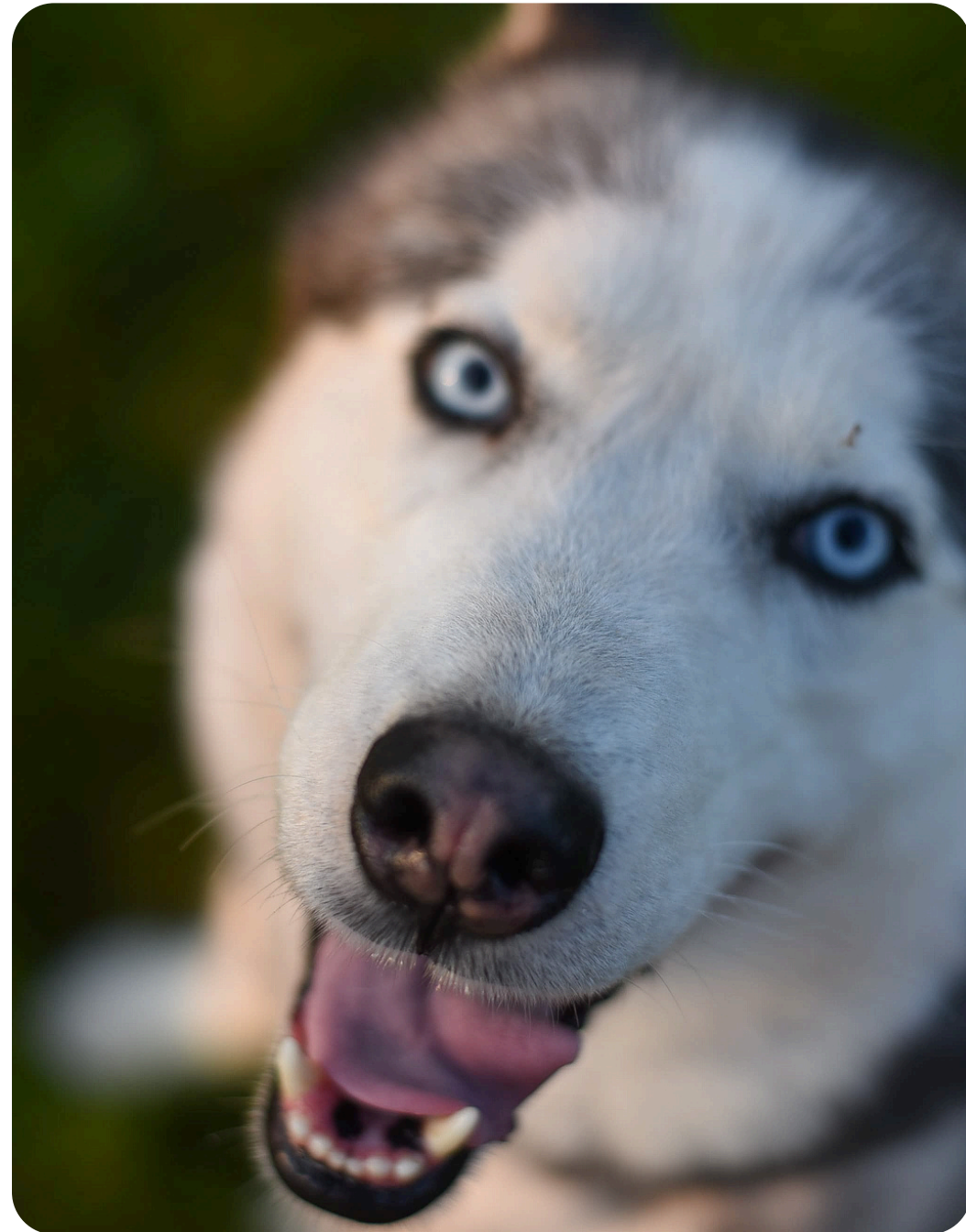
Guess the animals.



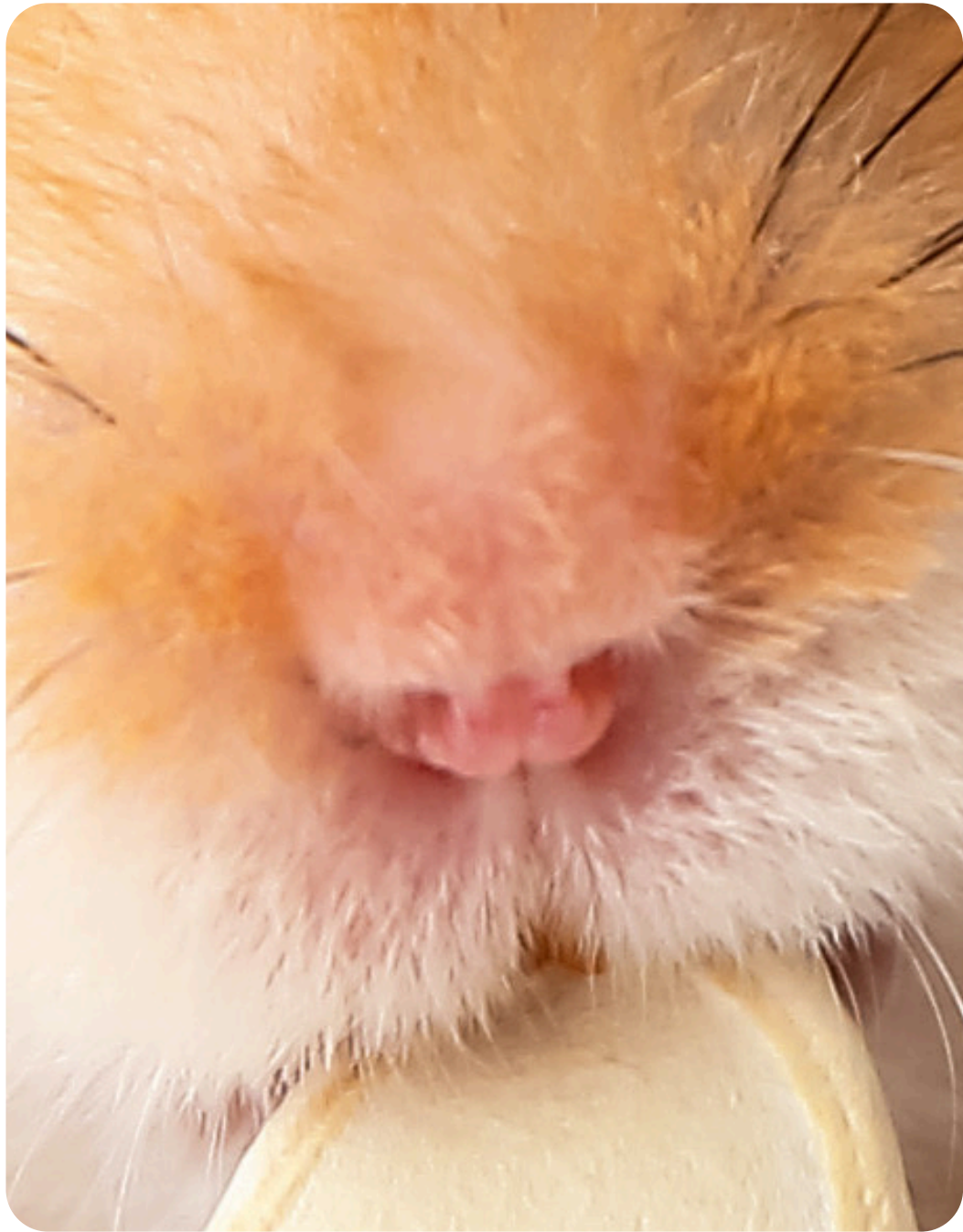


Well done!
How many ears
have I got?





Well done!
What colour are
my *eyes*?





**Well done!
Have I got a
big nose?**





**Well done!
Have I got
short **arms**?**



2

Click and make a puzzle. Read the words.

genially
EDUCATION

3

Click and match the words with the parts of the body.

eyes

hands

1 foot / 2 feet

arms

ears

mouth

legs

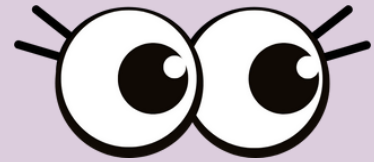
nose

tail

Submit Answers

4

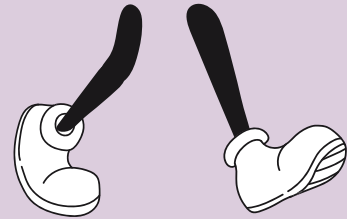
Choose the correct answer.



legs

eyes

ears



hands

tail

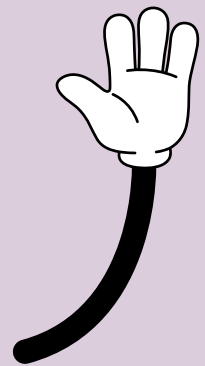
legs



feet

arms

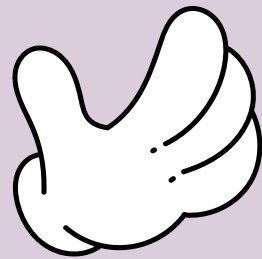
mouth



arms

ears

feet



mouth

hands

nose



tail

nose

hands

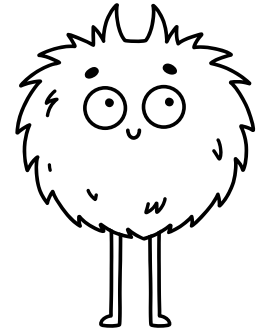


- 5 Read and circle the monsters. Be attentive!
- 1 How many monsters have got **three eyes** ? _____
- 2 How many monsters have got **three legs** ? _____
- 3 How many monsters have got **no arms**? _____
- 4 How many monsters have got **one nose**? _____
- 5 How many monsters have got **one mouth**? _____

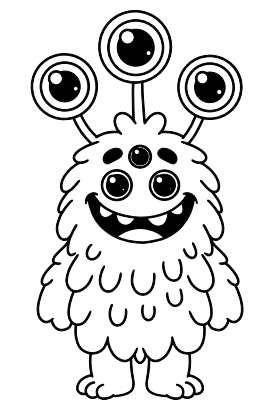




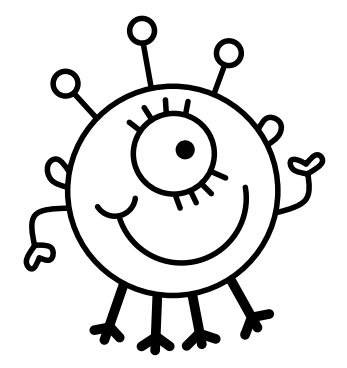
6 Complete the gaps.



It has got 2 and 1 .



It has got 5 , 2 and 2 .



It has got 1 , 4 and 2 .

7 Work in pairs. Choose one monster and describe it. Your partner guesses which monster it is.

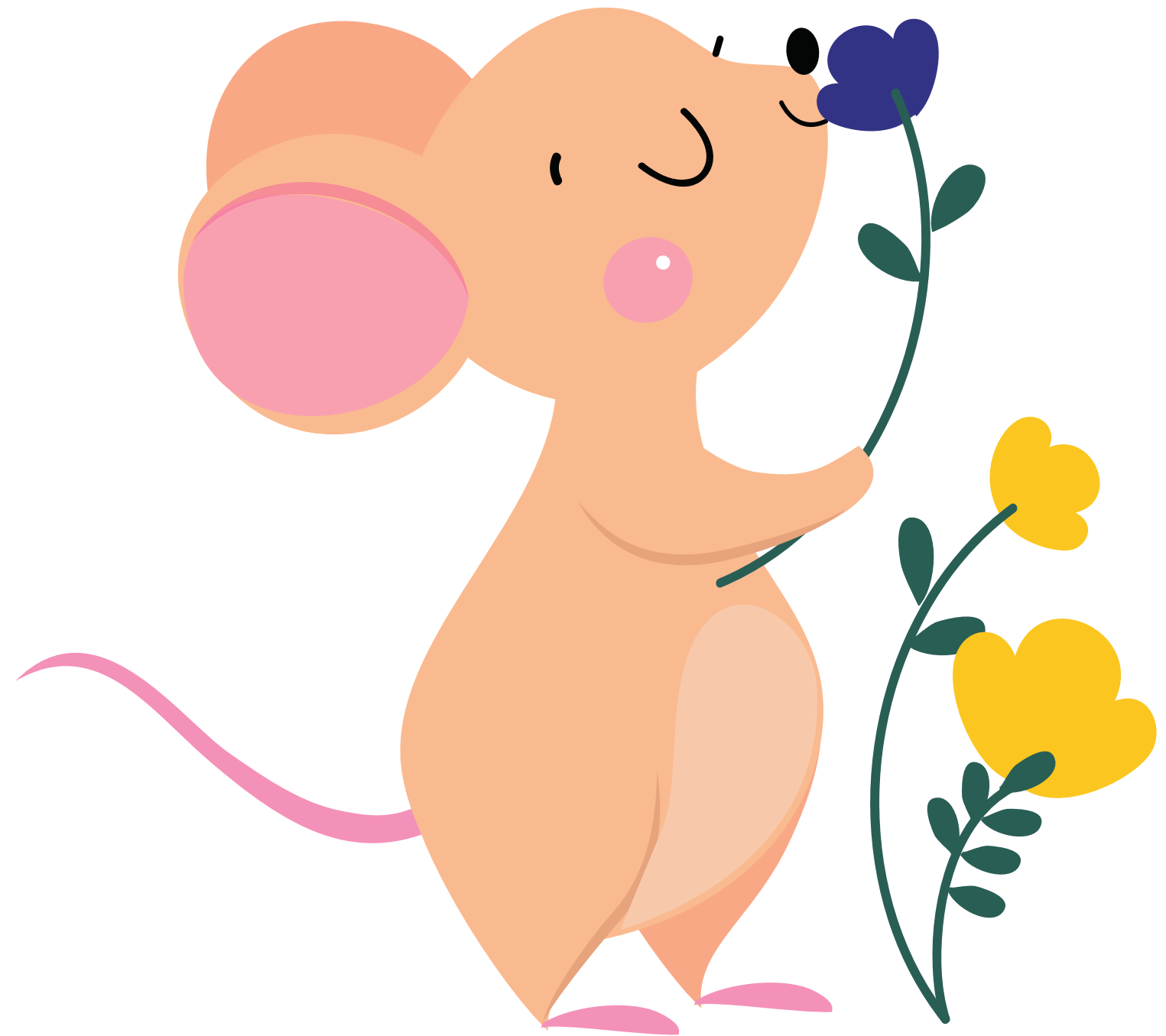


8

Continue the sentences.



I can **smell** with
my ...



8

Continue the sentences.



I can **touch** with
my ...



8

Continue the sentences.



I can **taste** with
my ...

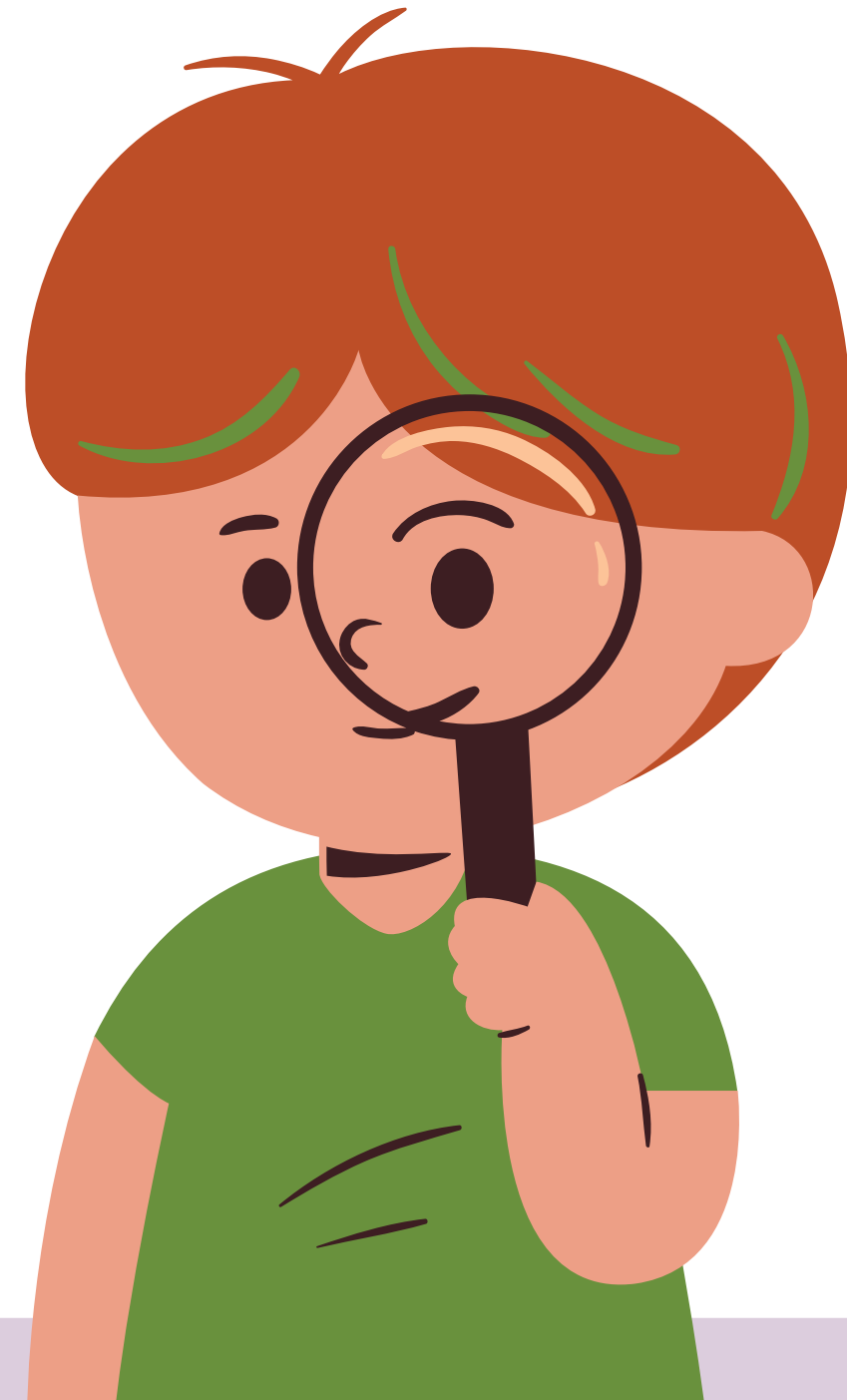


8

Continue the sentences.



I can **see** with
my ...



8

Continue the sentences.

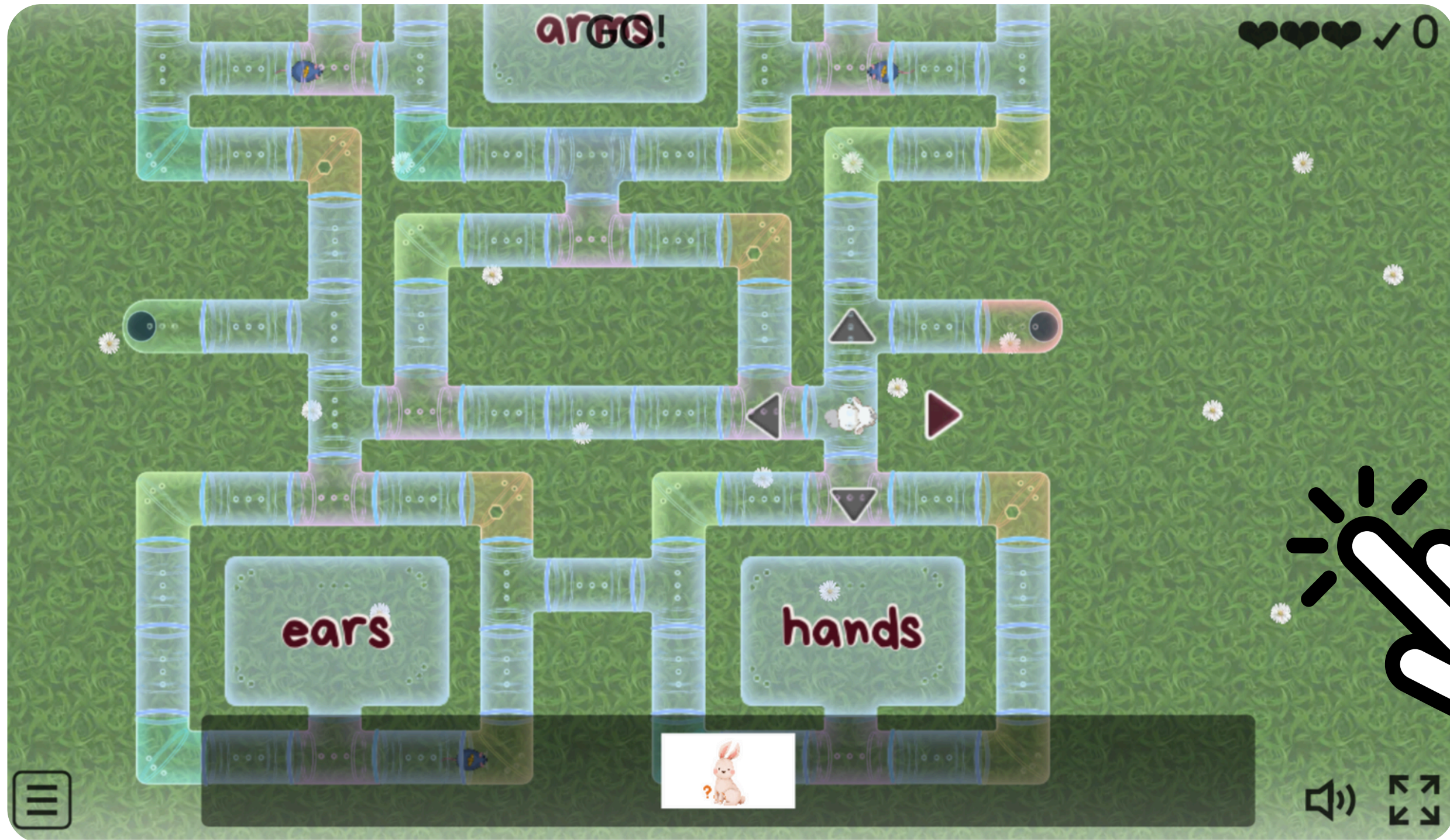


I can **hear** with
my ...



9

Click and play the game!



10

Unscramble the words. Then guess what animal it is.



“

I have four **sgel**, a long
tial, and I say "meow."
What am I?

”



“

I have four **legs**, a long **tail**, and I say "meow."
What am I?

”



“

I have big **eras** and a long **neso**.
I am very big, and I walk slowly.
What am I?

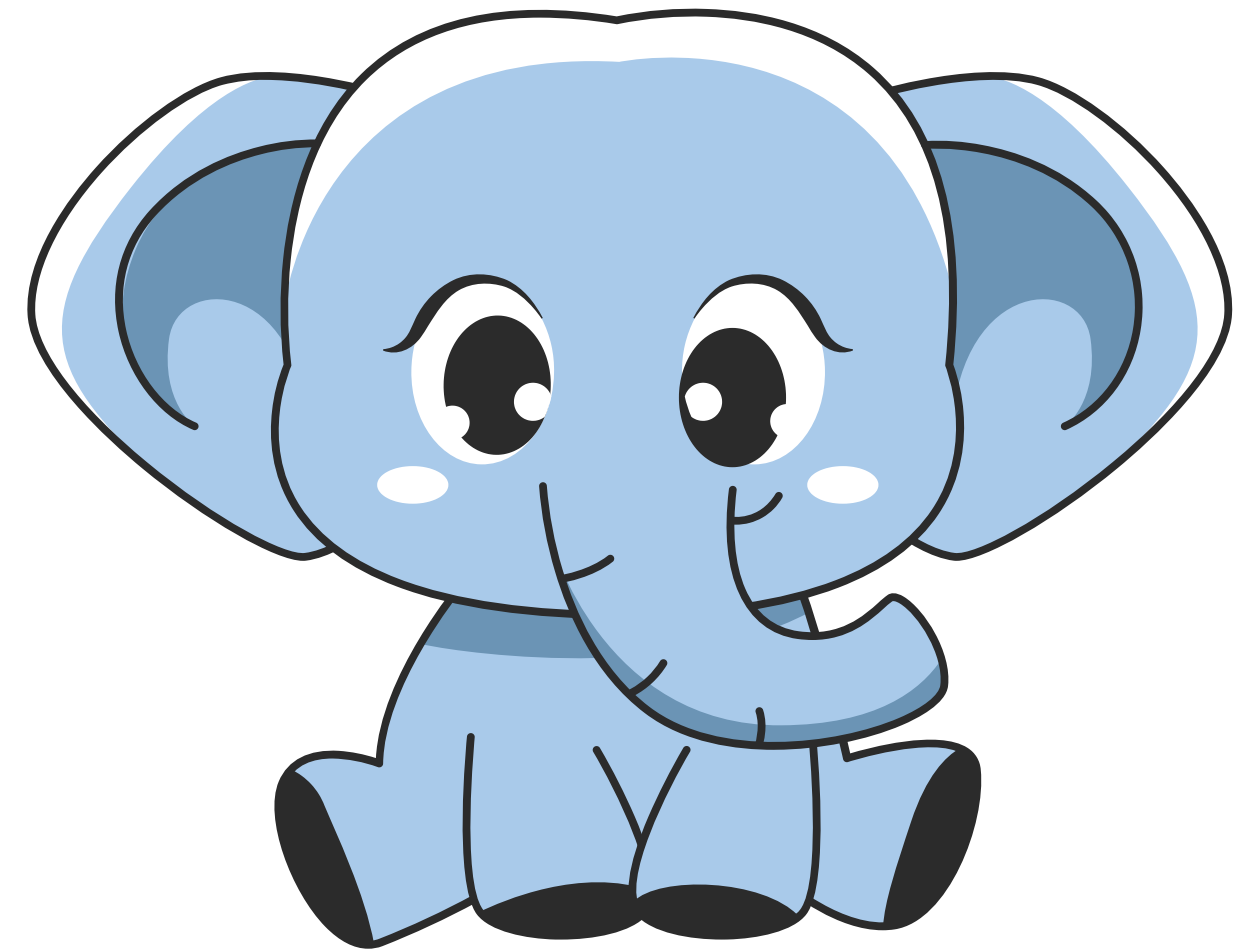
”



“

I have big **ears** and a long **nose**.
I am very big, and I walk slowly.
What am I?

”



“

I live in the ocean and have sharp teeth.
My big **tmhuo** is scary – who am I?

”



“

I live in the ocean and have
sharp teeth.
My big **mouth** is scary – who
am I?

”



“

I have big **eeys** and a wide
mouth.
I jump very high – who am I?

”



“

I have big **eyes** and a wide
mouth.
I jump very high – who am I?

”



“

I swim all day, but I don't
have **rmas**.
My tail helps me move - who
am I?

”



“

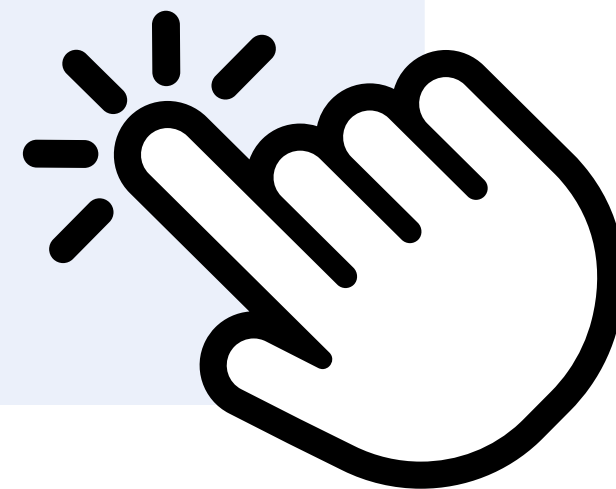
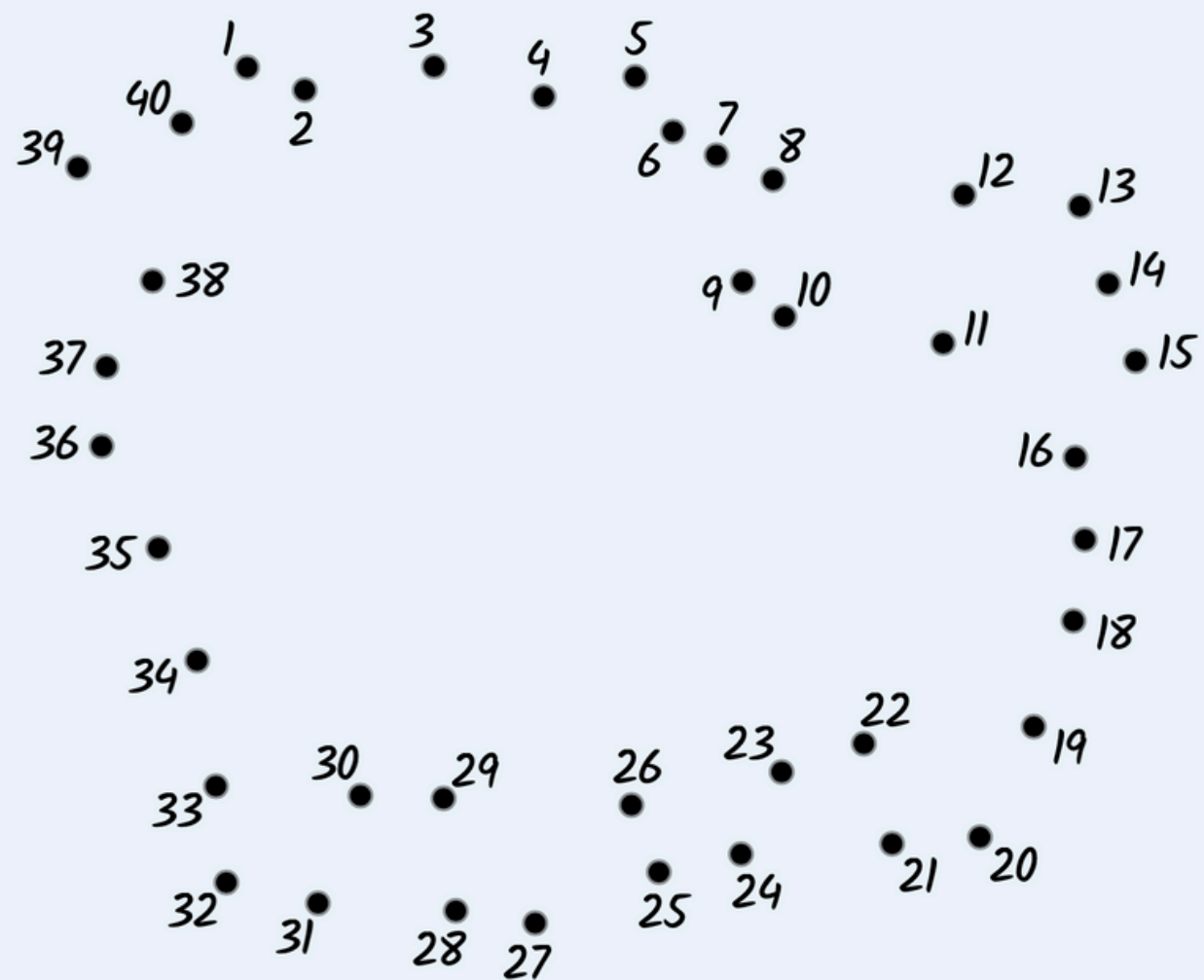
I swim all day, but I don't
have **arms**.
My tail helps me move – who
am I?

”





11 Connect the dots! Then describe the picture using the words from the lesson.



**It has got 2
eyes...**

EXTRA TASK

Click and choose the correct answer.



?

A **noise**

B **nose**

?



HOMEWORK

Write the words.

1 neos _____

2 muoht _____

3 esey _____

4 ersa _____

5 arsm _____

6 hdna _____

7 ftee _____

8 lesg _____

9 ialt _____

