



Describing Personality: Negative Prefixes in Use





Which personality traits make someone easy to communicate with?

Can a person's personality change after a difficult life experience?

Which negative personality traits are hardest for you to tolerate?

Which personality traits are helpful in leadership roles?

Can people change their personality traits?

Do you think people should change their personality to fit in, or stay themselves?



1

Read the situations below and choose the adjectives that describe them.



You borrowed money from a friend and lost it. You meet your friend and decide to tell the truth about what happened.



honest



dishonest

A student stays calm during an argument in class and tries to solve the problem instead of shouting or getting angry.



mature



immature

A classmate often promises to help with group work but usually arrives late or doesn't come at all.



reliable



unreliable

You notice that your mom is tired, so you lower the music and offer to help with her shopping.



considerate



inconsiderate

A colleague forgets important meetings, loses documents, and never knows where their things are.



organised



disorganised

1

Read the situations below and choose the adjectives that describe them.



You disagree with someone's opinion in a discussion, but you speak calmly and use respectful language.



polite



impolite

A person leaves their dog alone all day without water and doesn't think about the consequences.



responsible



irresponsible

A child follows the teacher's instructions and completes all tasks without arguing.



obedient



disobedient

You are in a restaurant and can't choose what to order, even after reading the menu several times.



decisive



indecisive

A person compliments someone, but you feel they don't really mean what they are saying.



sincere



insincere

Read the rules and complete the gaps with the appropriate words from exercise 1.

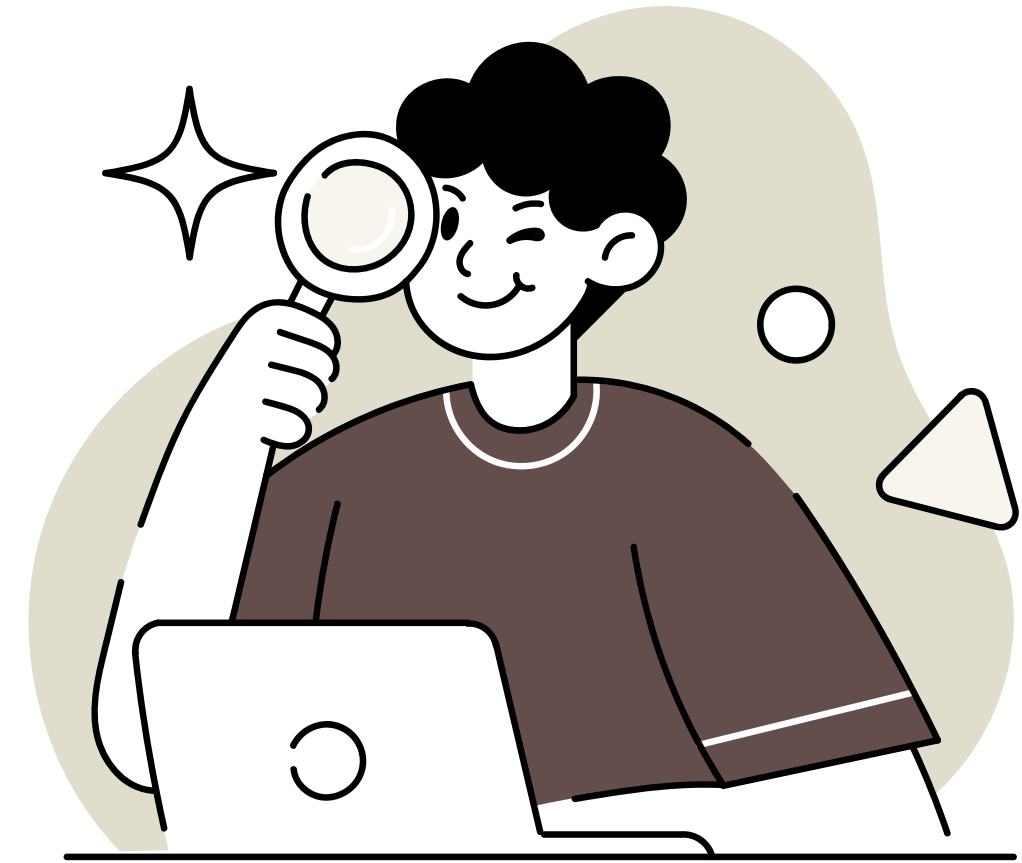


Negative prefixes are added to adjectives to give an opposite meaning.

The most common negative prefixes for adjectives are: **un-**, **in-**, **im-**, **il-**, **ir-**.

- **in-** is used with some adjectives : accurate → inaccurate, appropriate → inappropriate
- **im-** is used before p, b, m : polite → impolite, possible → impossible
- **il-** is used before l: legal → illegal
- **ir-** is used before r: responsible → irresponsible

Not all adjectives can take a negative prefix, so each word must be learned individually.
Some adjectives have a negative form, but the meaning may change slightly.



dis

im

un

in

ir

il

dishonest

immature

unreliable

inconsiderate

irresponsible

illegal

disorganised

impolite

indecisive

disobedient

insincere



3 Complete the gaps with the appropriate prefixes.

dis

im

un

in

ir

il

1. He is **indecisive** and often changes his mind at the last minute.
2. She is very **disorganised**, so she often forgets important dates.
3. His apology sounded **insincere**, and nobody believed him.
4. It was **irresponsible** of him to drive so fast in the rain.
5. The worker was **dishonest** about the mistake he made.
6. It is **impolite** to talk loudly on the phone in public places.
7. She is **unreliable** and rarely arrives on time.
8. His **immature** behaviour caused problems in the group.
9. The child was **disobedient** and refused to follow the rules.
10. It was **inconsiderate** to make noise while others were sleeping.



4 Correct the mistakes.

My worst ex-boyfriend was really difficult to be with. He was **im**indecisive and could never choose what to do, even for simple things like where to go for dinner. He was also very **in**disorganised and always forgot important dates, like my birthday or our plans. Sometimes he was **un**insincere and said nice things, but I didn't feel he really meant them. He was **im**inresponsible, like staying out late without telling me, and sometimes he was **il**dishonest about where he had been. He could be **un**impolite too, often interrupting me or making rude jokes. I found him **in**unreliable because I could never count on him to keep his promises. His **in**immature behaviour made even small arguments difficult, and he could be **in**disobedient when his parents or friends gave him advice. Overall, it felt **dis**inconsiderate that he didn't care about my feelings or our relationship.



5 Make the adjectives negative.

responsible

honest

irresponsible

dishonest

considerate

organised

inconsiderate

disorganised

polite

obedient

impolite

disobedient

decisive

sincere

indecisive

insincere

mature

reliable

immature

unreliable

6 Replace the phrases with the adjectives from exercise 5 and answer the questions.

1. Have you ever **been indecisive**? What happened?
2. Can a person who **is disorganised** still be successful?
3. How can you tell if someone **is insincere**?
4. Why **are** some people **irresponsible** at work or school?
5. Have you ever met someone who **is dishonest**? What happened?
6. Have you ever met someone who **is impolite**?
7. Can you describe someone who **is immature**?
8. Why **are** some people **disobedient**?
9. Have you ever met someone who is **inconsiderate**?
10. What would you do if a friend is **unreliable**?

7 Guess the word. Then make your own sentence with each word.

disorganised

- mess
- forget
- no plan

insincere

- fake
- pretend
- dishonest

irresponsible

- careless
- risk
- consequences

dishonest

- lie
- cheat
- tell

impolite

- rude
- interrupt
- disrespect

unreliable

- late
- promise
- depend

immature

- childish
- emotions
- overreact

disobedient

- rules
- refuse
- authority

inconsiderate

- selfish
- feelings
- ignore

indecisive

- decide
- think
- unsure



Answer the questions.



If you found out that your close friend was dishonest, what would you do?

Answer the questions.



If someone behaved in an immature way during a serious discussion, how would you react?

Answer the questions.



If your friend was inconsiderate and ignored your feelings, how would you respond?

Answer the questions.



If you had to rely on someone who was unreliable, how would it affect you?

Answer the questions.



If your teammate was very disorganised and kept forgetting important tasks, what would you do?

Answer the questions.



If a stranger was impolite to you in public, how would you handle the situation?

Answer the questions.



If your classmate / colleague was irresponsible and caused problems for the team, what would you say to them?

Answer the questions.



If a student was disobedient and refused to follow rules, how should the teacher react?

Answer the questions.



If you felt that someone's apology was insincere, would you accept it?
Why or why not?



extra practice

A) Complete the sentences with the correct adjective.

- He promised to help, but he didn't come. He is very **unreliable**.
- She laughed during a serious meeting — that was **immature**.
- Forgetting deadlines again shows how **irresponsible** he is.
- Saying sorry without meaning it is **insincere**.
- Leaving rubbish in public places is **impolite**.
- The child was **disobedient** and refused to listen to the teacher.
- She keeps changing her mind — she's **indecisive**.
- He didn't think about others and was **inconsiderate**.
- Lying to friends is **dishonest**.
- His desk is always messy; he's very **disorganised**.

B) Rewrite each sentence using the correct phrasal verb from the list below.

- a) often forgets plans and doesn't keep promises
- b) lies or hides the truth
- c) ignores other people's feelings
- d) cannot choose easily
- e) behaves childishly in serious situations
- f) refuses to follow rules or instructions
- g) speaks or acts rudely
- h) causes problems by not thinking about consequences
- i) messy, untidy, bad with planning
- j) sounds fake or not genuine

- **dishonest** b
- **immature** e
- **inconsiderate** c
- **unreliable** a
- **disorganised** i
- **impolite** g
- **irresponsible** h
- **disobedient** f
- **indecisive** d
- **insincere** j

C) Continue the sentences with your ideas.

- A dishonest person usually ...
- Immature behaviour can lead to ...
- Being inconsiderate can damage ...
- An unreliable person often ...
- Disorganised people often struggle with ...
- Impolite behaviour makes others feel ...
- Irresponsible behaviour can affect ...
- A person becomes disobedient when ...
- Indecisive people often find it hard to ...
- Insincere people usually ...